



Leicester
City Council

**MEETING OF THE NEIGHBOURHOOD SERVICES SCRUTINY
COMMISSION**

DATE: THURSDAY, 26 NOVEMBER 2020
TIME: 4:00 pm
PLACE: Microsoft Teams

Members of the Committee

Councillor Thalukdar (Vice-Chair)

Councillors Ali, Aqbany, Byrne, Govind, Joshi and Solanki
One unallocated Labour group place
One unallocated non group place

For Monitoring Officer

Officer contacts:

Anita Patel (Scrutiny Policy Officer)

Aqil Sarang (Democratic Support Officer),

Tel: 0116 454 5591, e-mail: Aqil.Sarang@leicester.gov.uk
Leicester City Council, 115 Charles Street, Leicester, LE1 1FZ

Information for members of the public

PLEASE NOTE that any member of the press and public may listen in to proceedings at this 'virtual' meeting via a weblink which will be publicised on the Council website at least 24hrs before the meeting. Members of the press and public may tweet, blog etc. during the live broadcast as they would be able to during a regular Committee meeting at City Hall / Town Hall. It is important, however, that Councillors can discuss and take decisions without disruption, so the only participants in this virtual meeting will be the Councillors concerned, the officers advising the Committee and any invitees to the meeting relevant to the reports to be considered.

Attending meetings and access to information

You have the right to attend/observe formal meetings such as full Council, committee meetings & Scrutiny Commissions and see copies of agendas and minutes. On occasion however, meetings may, for reasons set out in law, need to consider some items in private.

Dates of meetings and copies of public agendas and minutes are available on the Council's website at www.cabinet.leicester.gov.uk, or by contacting us using the details below.

Making meetings accessible to all

Braille/audio tape/translation - If you require this please contact the Democratic Support Officer (production times will depend upon equipment/facility availability).

Further information

If you have any queries about any of the above or the business to be discussed, please contact: **Aqil Sarang, Democratic Support Officer on 0116 454 5591**. Alternatively, email Aqil.Sarang@leicester.gov.uk, or call in at City Hall.

For Press Enquiries - please phone the **Communications Unit on 0116 454 4151**.

PUBLIC SESSION

AGENDA

LIVE STREAM OF MEETING

A live stream of the meeting is available on the link below:

<https://tinyurl.com/vy48hqze>

1. APOLOGIES FOR ABSENCE

2. DECLARATIONS OF INTEREST

Members are asked to declare any interests they may have in the business to be discussed.

3. MINUTES OF THE PREVIOUS MEETING

Appendix A

The minutes of the meeting of the Neighbourhood Services Scrutiny Commission held on 28 September 2020 are attached and Members are asked to confirm them as a correct record.

4. PETITIONS

The Monitoring Officer to report on the receipt of any petitions submitted in accordance with the Council's procedures.

5. QUESTIONS, REPRESENTATIONS AND STATEMENTS OF CASE

The Monitoring Officer to report on the receipt of any questions, representations and statements of case submitted in accordance with the Council's procedures.

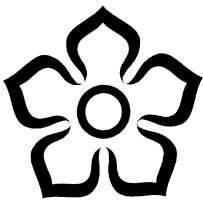
6. DRAFT LEICESTER LOCAL PLAN (2020-2036) PUBLIC CONSULTATION

Appendix B

The Head of Planning and Development submits a presentation informing the Commission on the Draft Local Plan (2020-2036) Public Consultation.

Members of the Commission are recommended to receive the presentation and pass any comments to the Head of Planning and Development.

7. ANY OTHER URGENT BUSINESS



Leicester
City Council

APPENDIX A

Minutes of the Meeting of the
NEIGHBOURHOOD SERVICES SCRUTINY COMMISSION

Held: MONDAY, 28 SEPTEMBER 2020 at 4:00 pm

P R E S E N T:

Councillor Thalukdar (Chair)

In Attendance:

Councillor Ali
Councillor Aqbany

Councillor Solanki

Councillor Govind
Councillor Joshi

Also Present:

Assistant City Mayor Councillor Master

* * * * *

61. APOLOGIES FOR ABSENCE

There were no apologies for absence.

62. DECLARATIONS OF INTEREST

There were no declarations of interest.

63. MINUTES OF THE PREVIOUS MEETING

AGREED:

That the minutes from the Neighbourhood Services Scrutiny Commission held on 6 August 2020 be noted as an accurate record.

64. PETITIONS

The Monitoring Officer reported that no petitions had been received.

65. QUESTIONS, REPRESENTATIONS AND STATEMENTS OF CASE

The Monitoring Officer reported that no questions, representations or statements of case had been received.

66. COVID 19 UPDATE ON SERVICE RECOVERY PLANS

The Director of Finance presented the presentation updating the Commission on the service recovery plans as a result of Covid-19. As part of the presentation important information was shared on how members of the public could arrange meetings in a safe manner for essential business at the Customer Service Centre (https://youtu.be/Hnq3TGKR_Nk).

The Assistant City Mayor for Neighbourhoods took the opportunity to thank Officers and Elected Members for adapting to changing work situations and their response during these times.

During the discussion Members of the Commission commended the Officers for the work that had been undertaken. Members also suggested that community-based organisations also received a commendation for the work these organisations had contributed in supporting the Leicester during the pandemic.

It was noted that only emergency housing repairs calls were now being taken and the team were now working within the guidelines to carry out emergency housing repairs and these could still be reported online. There may still be a delay in some of these repairs to ensure safe working practices

In terms of the fraud figures presented in the presentation there were a few applications that the National Office for Fraud had alerted the team to and these were being investigated. It was noted that no application had yet been identified as a fraudulent application.

Members of the Commission welcomed the launch of the Test and Trace scheme and app. It was suggested that with the winter months now approaching this would be vital for the service for effective and efficient tracing. It was noted that the three key symptoms of the virus; a high temperature, a new cough and a loss in taste and smell would help people distinguish the difference between the virus and the seasonal flu. For those that required additional support it was suggested that calling 111 and speaking to the NHS would help keep people informed and advice on testing would be made.

It was noted that the new Test and Trace support payment was only made to those on low income households, who had been tested positive and were required to self-isolate.

Members of the Commission commended the C-19 helpline as it had been an effective way for Members to communicate with Officers efficiently with excellent response times.

Members provided the Director of Finance on feed back to the discretionary grants and suggested that the timescale on stage three was not suitable and as a result, businesses had been at a loss as they had missed the deadline. It was noted that this was due to the government calling an end to the scheme.

Members were informed that the government had provided a list of business that were asked to close as part of the local lockdown and that these were the businesses that were eligible to apply for the local lockdown grant.

Agreed:

- 1) That the Director of Finance and her team be thanked for their work;
- 2) That the Director of Finance be requested to bring any future updates to the Commission and;
- 3) That the presentation be noted.

67. SCRUTINY REVIEW DRAFT REPORT ON FINDINGS INTO 'THE VIABILITY AND APPROPRIATENESS OF A COMMUNITY LOTTERY FOR LEICESTER'

Councillor Thalukdar as Chair of the Neighbourhood Services Scrutiny Commission presented the report into the findings of the viability and appropriateness of a community lottery for Leicester.

It was noted that this review was initially instigated by the late Councillor Jean Khote and faced further delay due to the pandemic.

The Chair suggested Members focus on the findings in the summary of the report which suggested that it would not be viable or appropriate to pursue a community lottery in Leicester.

The Chair moved to approve the draft report and Members of the Commission voted unanimously to do so.

Agreed;

- 1) That report be noted;
- 2) That the report be presented to the Overview Select Committee and;
- 3) That the Commission request that the responses be brought back to the Commission at a future date.

68. ANY OTHER URGENT BUSINESS

There being no items of urgent business the meeting closed at 5:10pm.

An aerial photograph of Leicester, UK, taken at dusk. The city is illuminated by streetlights and building lights, with a warm orange and pink glow from the setting sun in the sky. The text is overlaid in the center of the image.

Draft Leicester Local Plan (2020 – 2036)
Public Consultation
Neighbourhood Services
Scrutiny Commission

26th November 2020

White Paper: Planning for the Future



- Growth, renewal, protection designations
- National development management policies
- Permission in principle, permitted development and local design codes
- Housing Methodology
- National Infrastructure Levy
- Timescales

The Importance of a Local Plan

Draft Local Plan for public consultation has been produced

- Originally planned for March but delayed due to Covid to allow effective public consultation
- Statement of Community Involvement (SCI) revised
- Consultation on same draft plan and supporting evidence proposed in March
- Additional evidence has been completed and will be consulted on at the same time but will not inform this current draft plan

The Importance of a Local Plan

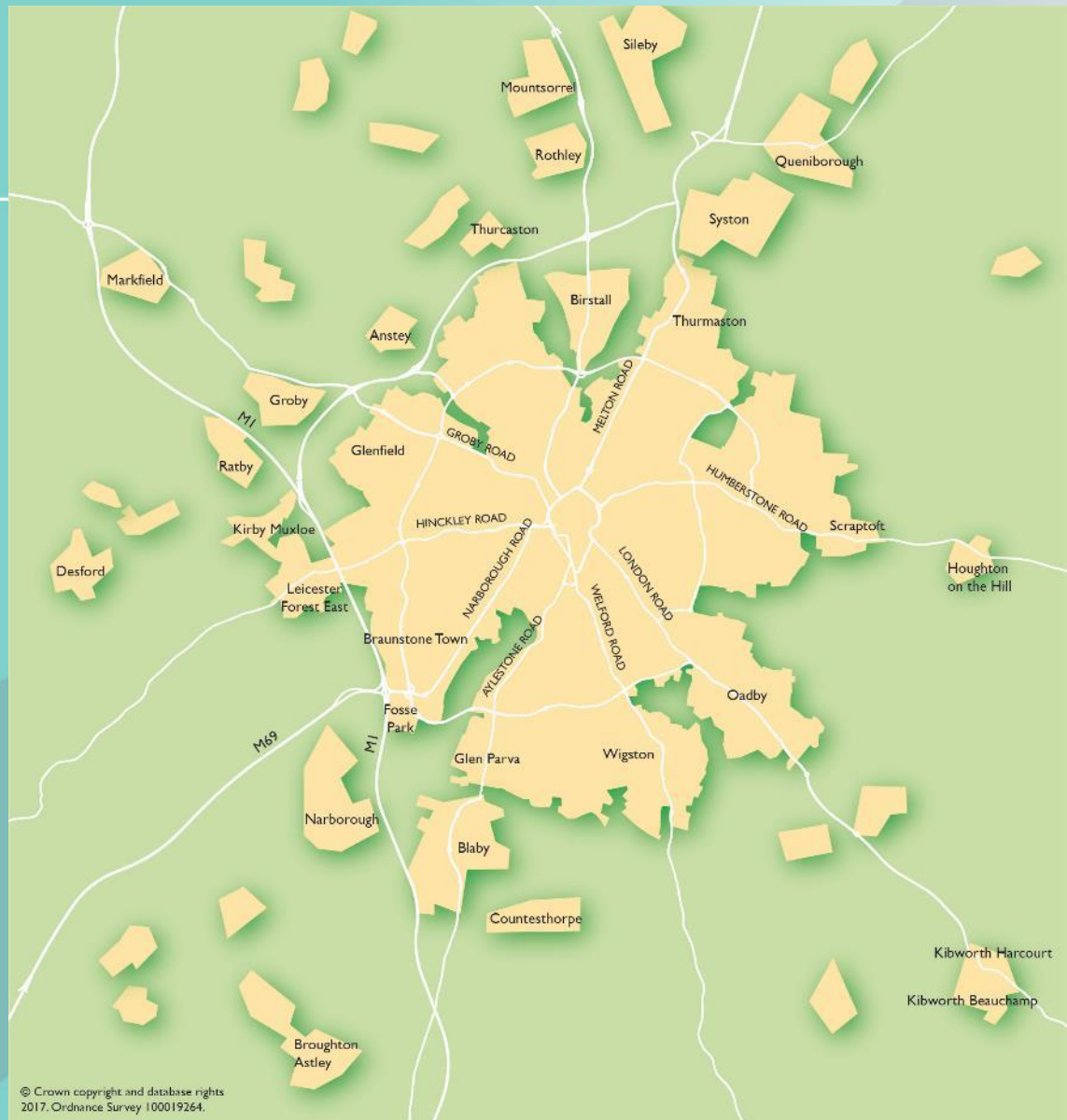
Plan will cover the period 2020 – 2036 and seeks to:

- Meet the needs for homes, jobs, shopping, and leisure
 - Allocate sites for the above
 - Set the council's planning policies (e.g. Climate Change and Public Health)
 - Encourage Investment & Economic Growth
 - Facilitate Place-making and set high quality design expectations
-
- It also includes specific policies to consider planning application
 - The plan needs to be evidenced as viable and deliverable

∞

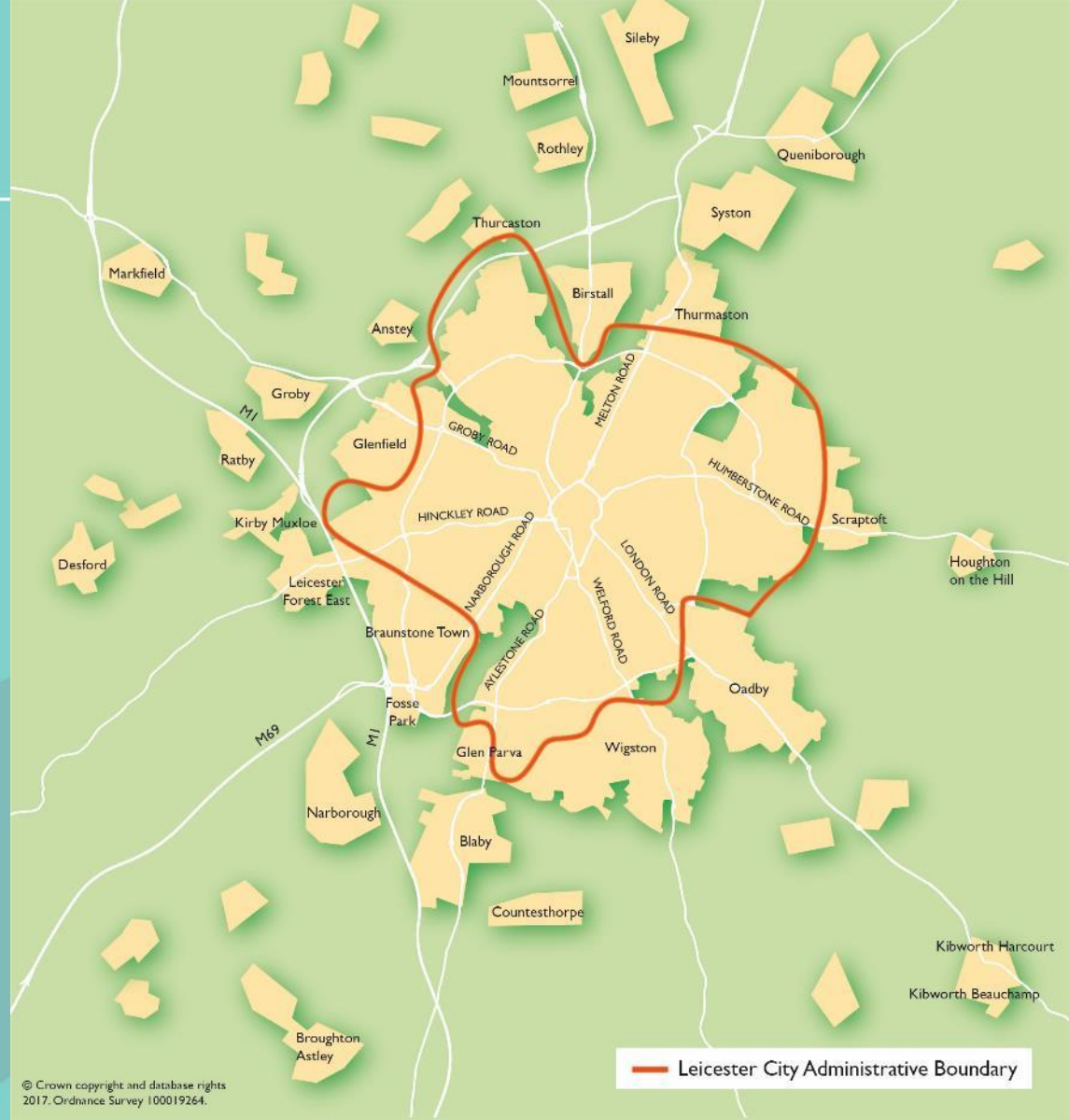
A Growing City

6



A Growing City

- Leicester has already grown through the boundary and will continue to do so
- Strategic Growth Plan – approved to shape the future of Leicester and Leicestershire to 2050
- Recognises approx 1/3 City growth may need to be redistributed to Districts



Housing Strategy

- Housing Need -1,712 a year until 2036
- 29,104 dwellings over plan period
- Any unmet need will need to be redistributed to adjacent districts and agreed through a Statement of Common Ground

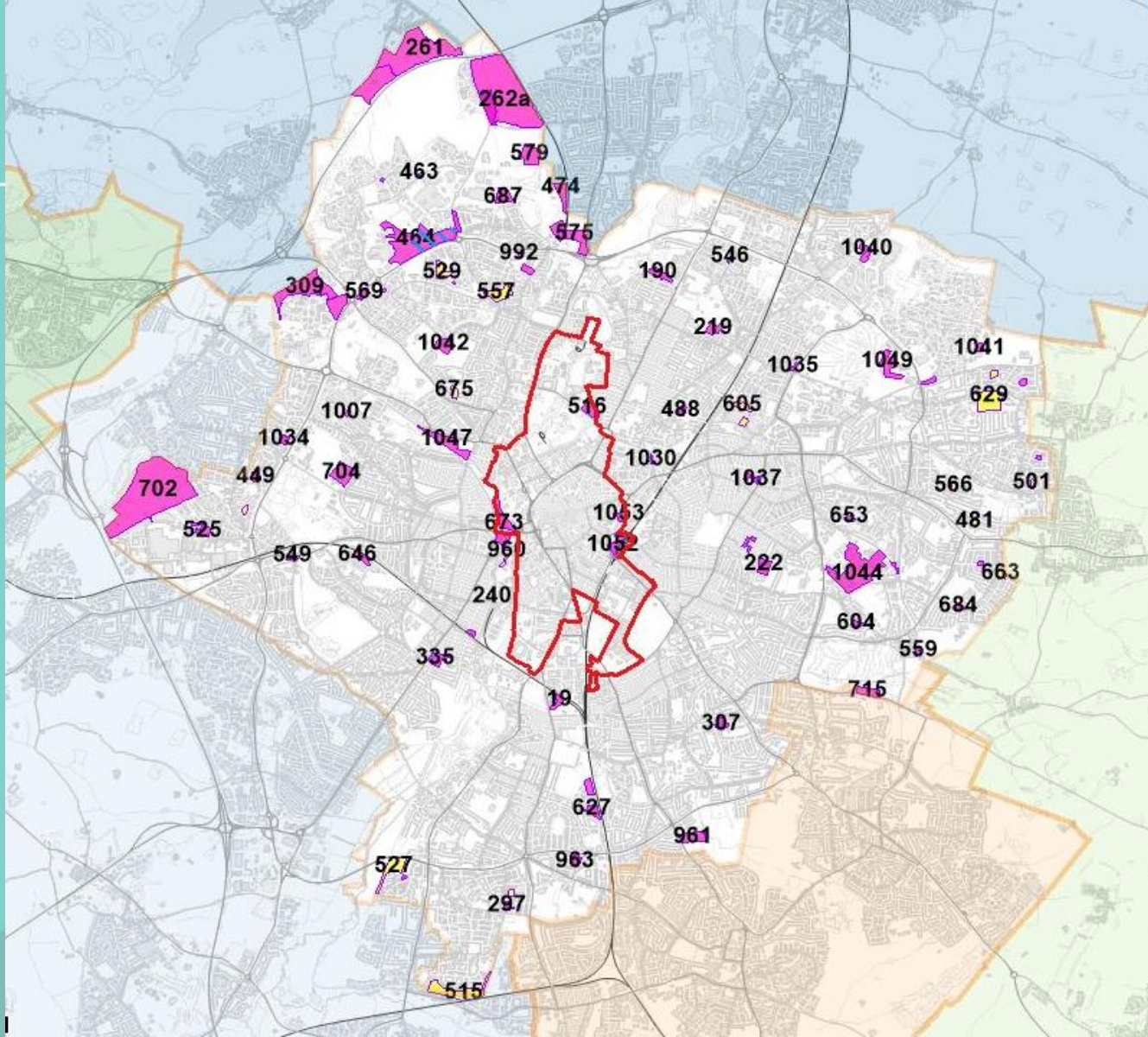
11

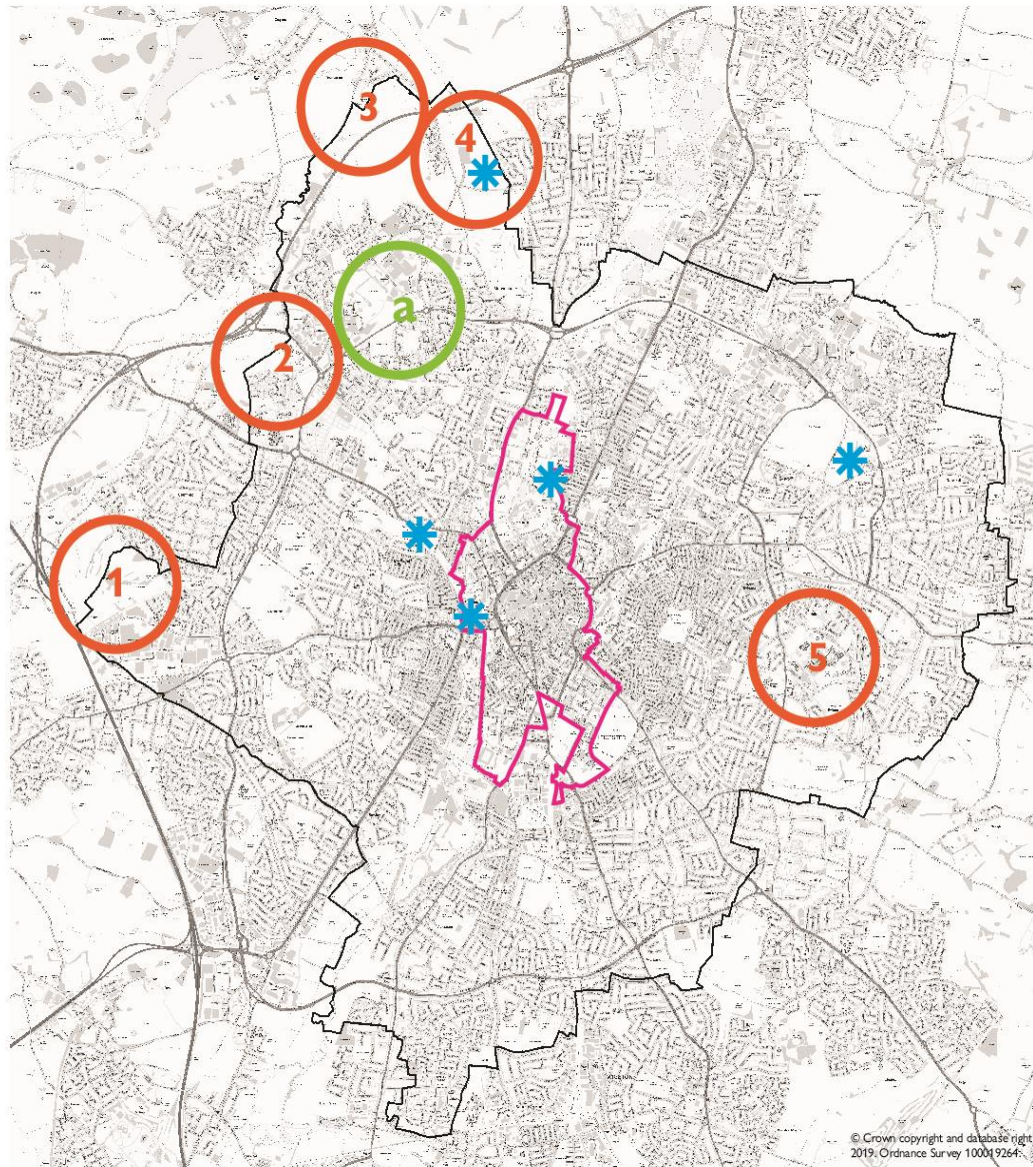


Housing Strategy – Draft Allocations

- 5 Strategic Sites
 - Former Western Park Golf Course (LCC ownership – Housing/Open Space/Employment)
 - East of Ashton Green (LCC ownership – Includes Open Space/Employment)
 - North of A46 bypass (LCC/Private ownership – Including Open Space)
 - Land at Billesdon Close and Paddock (Private ownership)
 - Leicester General Hospital (NHS)
- Approximately 85 other sites for housing (Mix of LCC and Privately owned sites)
- Central Development Area (CDA) – City Centre and Brownfield Sites
- Other Allocations – Education, Gypsy and Travellers and Red Hill Roundabout

12

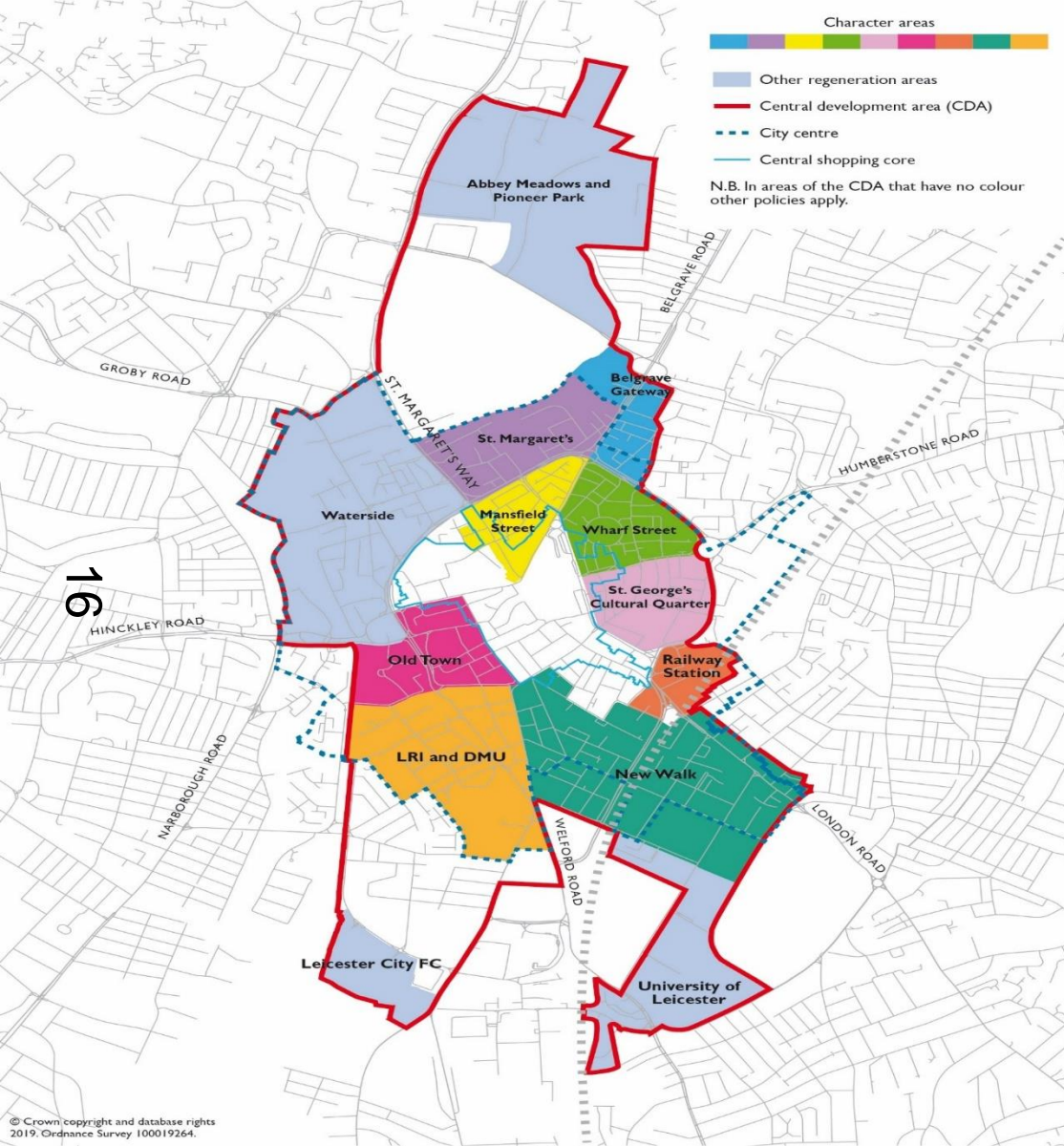




- Central development area
- Strategic housing site
 1. Western Golf Course
 2. Land West of Anstey Lane
 3. Land North of A46 Western Bypass
 4. Land East of Leicester Road
 5. Land at Leicester General Hospital
- Strategic employment site
 - a. Land at Beaumont Park
- ✱ Proposed new school allocation

Housing Strategy

- Housing need 29,104 dwellings
- 15 • Anticipated Supply identified in the Plan – 21,362 dwellings
- **Shortfall – 7,742 to be redistributed through agreement with the district councils**



Central Development Area (CDA)

- Providing around 4900 dwellings
- Also focus for commerce, retailing, culture, leisure and entertainment
- Character Areas defined
- Protect and enhance Historic Environment




Key Strategy - Employment

- Employment Need – 67 Ha for light/general industry and small scale storage
- Sites provide 44ha of employment land
- 45,000 sqm offices
- Large scale warehousing/storage provided mainly in districts

17



Employment Draft Allocations

- New Employment sites at Western Park Golf Course (Part), East of Ashton Green (Part), and Beaumont Leys Park.
-  New Offices at two new sites – Around Railway Station and land around Phoenix Square
- City Centre still the focus for Offices



Key Strategy – Open Space

- Balance between Housing, Employment and Public Open Space
- Informed by the Open Space Sports & Recreation Study (OSSR)
- Combination of population growth and planned development will mean that some green wedge will be lost and quantity of public open space will be reduced



Key Strategy – Open Space

- Overall, increase in pressure on open spaces across the city, although extent varies in different areas.
- Minimised loss of open space in areas with existing under provision
- Will take opportunities to provide new open spaces where possible e.g. on Strategic Sites and improve existing public open space

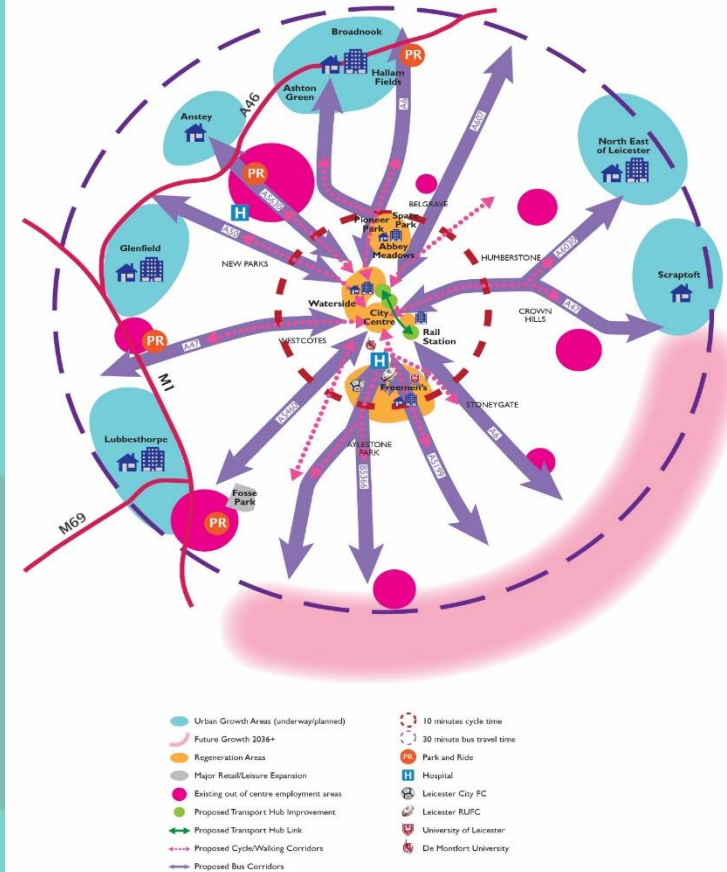
20



Key Strategy – Transport

- Links to new Local Transport Plan (Consultation to commence early 2021), Transforming Cities Programme and Work Place Parking Levy
- Improving main transport hubs and the connections between them
- Fast, efficient, and enhanced bus network
- Promoting walking, cycling and sustainable transport
- Improving Leicester's Air Quality
- Supporting future transport Improvements including road and rail

21



Key Policies in Draft Local Plan

- Climate Change – policies will contribute in an integrated way including Air Quality, SuDs, flooding, transport, energy.
- Health and Wellbeing – Crossover with other policies. e.g. Good Design, Open Spaces, Employment, Transport
- Affordable Housing: Up to 30% on greenfield sites
- Internal Space Standards - City wide
- Houses in multiple Occupation/Student Housing /Retention of Family Homes

22



Key Policies in Draft Local Plan

- Delivering Quality Places – Tall Buildings, Inclusive design, backland development
- 23 • Heritage – Preservation of Archaeology and City's Heritage Assets
- Culture and Tourism – includes Great Central Railway Museum and Places of Worship



Key Policies in Local Plan

- St Georges Quarter – Policy to build on success of arts, cultural industries in this particular area
- Neighbourhood Employment Areas – Protect smaller areas of employment land which are usually within residential areas
- Retailing – Policies to support City Centre, District and Local Centres. Support for Leisure and Cultural facilities - New E Class Use

24



Key Policies in Local Plan

- Open Space – Maintain and enhance the quality of open space network (including s106)
- 25. • Biodiversity Gain – Protection of existing designated sites and support for net gain – subject to Government guidance
- Protection of existing sports pitches and support for new facilities



Neighbourhoods

- Policy TCR 07 – Support Neighbourhood Shopping Parades
- Policy DPQ01 – Design Principles – Safe Environments
- Policy Ho10 – Houses in Multiple Occupation (HMOs)
- Policy CT02 – Assets of Community Value
- Policy CT03 – Protection of Public Houses
- PE 01 - Specific policy on Planning Enforcement

Supporting Evidence

- Independent Infrastructure Assessment looking at needs over Plan Period :
 - Potential future Library, Youth Services and Community halls
 - Sports and Leisure facilities
 - Health Care provision
 - Emergency Services - inc liaison with Police Service

Timetable

- Issues and Options - Public Consultation complete
- Emerging Options, Sites and Development Management Policies – Public Consultation completed
- Full Council 19th February 2020 approved
- Public Consultation (Reg 18) – Started 14th September 2020 for 12 weeks (Ends 7th December)
- Submission Local Plan Consultation (Reg 19) – Autumn 2021
- Adoption Summer/Autumn 2022

